

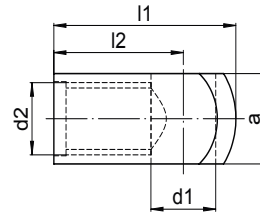
End fittings

Steel joint eyelets

to meet the highest demands on stability and durability

| Part number | a | l1 | l2 | d1 | d2 |
|-------------|---------------|-----------------|---------------|---------------|----|
| 06752017 | 10 (0.394) | 19.5 (0.768) | 13 (0.512) | 8 (0.315) | M8 |
| 06700338 | 10 (0.394) | 20.5 (0.807) | 14 (0.551) | 8 (0.315) | M8 |
| 06700344 | 10 (0.394) | 22.5 (0.886) | 16 (0.630) | 8 (0.315) | M8 |
| 06750019 | 10 (0.394) | 23.5 (0.925) | 14 (0.551) | 10 (0.394) | M8 |
| 06700343 | 12 (0.472) | 21.5 (0.846) | 14 (0.551) | 10 (0.394) | M8 |
| 06700336 | 12 (0.472) | 23.5 (0.925) | 16 (0.630) | 10 (0.394) | M8 |

All figures in [mm]/(inch)

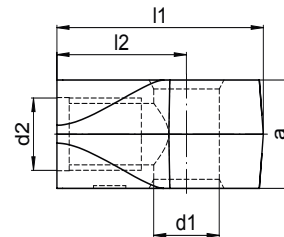


Zinc joint eyelets

for applications subject to low loads

| Part number | a | l1 | l2 | d1 | d2 |
|-------------|---------------|-----------------|---------------|---------------|----|
| 06500155 | 12 (0.472) | 25.5 (1.004) | 16 (0.630) | 8 (0.315) | M8 |
| 06500145 | 12 (0.472) | 25.5 (1.004) | 16 (0.630) | 10 (0.394) | M8 |
| 06500029 | 12 (0.472) | 25.5 (1.004) | 16 (0.630) | 12 (0.472) | M8 |

All figures in [mm]/(inch)

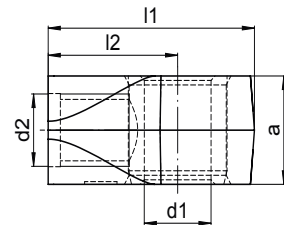


Zinc joint eyelets with a plastic bushing

for smooth function and installation that is free of clearance

| Part number | a | l1 | l2 | d1 | d2 |
|-------------|---------------|-----------------|---------------|---------------|----|
| 16560002 | 12 (0.472) | 25.5 (1.004) | 16 (0.630) | 8 (0.315) | M8 |
| 16560003 | 12 (0.472) | 25.5 (1.004) | 16 (0.630) | 10 (0.394) | M8 |

All figures in [mm]/(inch)

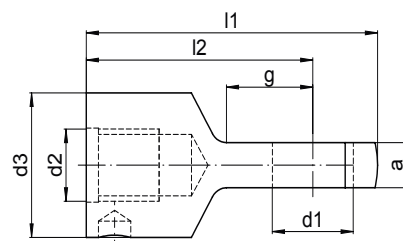


Steel joint eyelets

for particularly thin fork receptors

| Part number | a | l1 | l2 | d1 | d2 | d3 | g |
|-------------|--------------|---------------|---------------|---------------|----|---------------|-----------------|
| 06750017 | 5 (0.197) | 38 (1.496) | 28 (1.102) | 10 (0.394) | M8 | 16 (0.630) | 10.5 (0.413) |
| 06700348 | 5 (0.197) | 36 (1.420) | 28 (1.102) | 8 (0.315) | M8 | 16 (0.630) | 10.5 (0.413) |

All figures in [mm]/(inch)



Steel fork heads

for ease of assembly and to meet the highest demands on stability and durability

| Part number | a | b | l1 | l2 | d1 | d2 | g |
|-------------|---------------|---------------|---------------|---------------|---------------|----|---------------|
| 06800124 | 16 (0.630) | 8 (0.315) | 42 (1.645) | 32 (1.260) | 8 (0.315) | M8 | 16 (0.630) |
| 06800132 | 20 (0.787) | 10 (0.394) | 52 (2.047) | 40 (1.575) | 10 (0.394) | M8 | 20 (0.787) |

All figures in [mm]/(inch)

