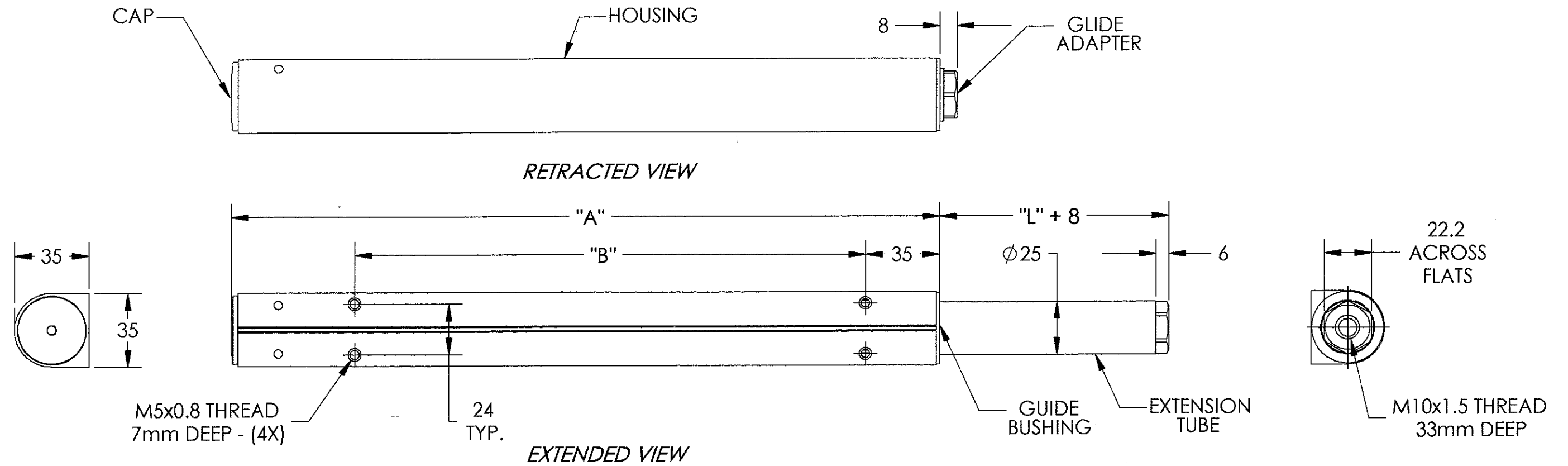


THE INFORMATION CONTAINED IN THIS DRAWING IS THE SOLE PROPERTY OF SUSPA INCORPORATED. ANY REPRODUCTION IN PART OR AS A WHOLE WITHOUT THE WRITTEN PERMISSION OF SUSPA INCORPORATED IS PROHIBITED.



CYLINDER DESCRIPTION	"L" STROKE	"A" DIMENSION	"B" DIMENSION
CB415	150	258.5	165
CB420	200	333.5	240
CB431	300	463.5	340
CB440	400	558.5	340
CB615	150	258.5	165
CB631	305	463.5	340

**NOTES:**

1.) ALL DIMENSIONS ARE REFERENCE ONLY.

2.) MATERIAL SPECIFICATIONS:

CAP: BLACK LDPE.

HOUSING: TEMPERED ALUMINUM WITH CLEAR ANODIZED FINISH.

GUIDE BUSHING: BLACK ACETAL.

EXTENSION TUBE: STAINLESS STEEL.

GLIDE ADAPTER: STEEL WITH ZINC PLATED FINISH.

**DO NOT MANUFACTURE TO THIS DRAWING UNLESS IT IS MARKED "CONTROLLED"**

DO NOT SCALE THIS DRAWING  
DIMENSIONS ARE IN MILLIMETERS

TOLERANCES UNLESS OTHERWISE SPECIFIED

ONE PLACE DECIMAL	±0.2	ANGULAR
TWO PLACE DECIMAL	±0.1	±2°

DRAWN BY: JED    DATE: 11/11/04    SCALE: 1:2

**CUSTOMER DRAWING**

REV	ECN	REVISIONS	CHANGED BY	APPROVED BY	DATE (MM/DD/YY)
				JED	11/11/04
<b>CB CYLINDERS</b>					
MATERIAL: N/A					
DRAWING NUMBER: S40-0001					
3970 Roger B. Chaffee S.E. Grand Rapids, Michigan 49548-3497 www.suspa-inc.com					DRAWING SIZE: B